



THE FINISHING TOUCH

INSTALLATION, USE & CARE INSTRUCTIONS

*Thank you for your purchase, please enjoy your new Questech Tile. Surface markings and natural color variations are inherent qualities of Questech Cast Stone, Cast Metal and Natural Stone; adding to the beauty of all Questech products. **Please inspect your product prior to installation.***

QUESTECH TILE WARRANTY

The Questech limited warranty for Questech Cast Stone Tile, Questech Cast Metal Tile, and Questech Natural Stone Tile can be found at: www.Questech.com/Warranty

Q-SEAL™ PERMANENT PROTECTION

Tile surfaces are protected by Q-Seal, a permanent sealer that is water and stain resistant, protects against abrasion, and features Ultra-Fresh® anti-microbial protection, which inhibits the growth of stain and odor-causing mold and mildew. Q-Seal is factory-applied and never needs re-sealing.

Q-SEAL WARRANTY

Q-Seal is guaranteed to be water and stain resistant for as long as you own your home. For complete warranty information please visit: www.Questech.com/Warranty

APPLICATIONS

- WALL: All tiles are recommended for use as a wall covering in interior applications.
- FLOOR: Tiles designated as “floor” are recommended for use as a wall or floor covering.
- COUNTERTOPS: Tiles are NOT recommended for use as a surface for countertops.
- WET AREAS: The tiles can be installed in wet areas such as backsplashes, bathroom walls and shower enclosures (including steam showers), but are NOT recommended in or near swimming pools & hot tubs because pool chemicals may harm our protective sealer (Q-Seal™).
- EXTERIOR: Tiles are NOT recommended for exterior applications.
- RESIDENTIAL & COMMERCIAL: Tiles are recommended for residential and light commercial applications.

INSTALLATIONS INSTRUCTIONS

Follow generally accepted good practices for installation of ceramic tile. Take careful note of the following instructions specific to tiles *Cast in Questech*.

SETTING MATERIALS

Use the following setting materials for proper adhesion:

- Thin-Set: A liquid latex (polymer) fortified premium thin-set Portland cement mortar conforming to ANSI A118.4.
- Epoxy Adhesives: A water-cleanable epoxy mortar conforming to ANSI A118.3.
- Mastics & Adhesives: A Type 1 organic adhesive conforming to ANSI A136.1

(examples: latex mastic adhesive; acrylic latex adhesive).

SETTING METHODS

- Follow adhesive manufacturer’s instructions for preparation, mixing, application, and cleanup.
- Trowel a layer of adhesive on the back of each tile prior to placing on the combed adhesive bed to obtain 100% coverage.
- Do NOT beat in with the butt-end of the trowel.

GROUTING MATERIALS

Use the following grouting materials:

- Cement: A liquid latex (polymer) fortified premium Portland cement grout conforming to ANSI A118.6.
- Epoxy: A water-cleanable grouting epoxy conforming to ANSI A118.3.

GROUTING METHODS

- Follow grout manufacturer’s instructions for preparation, mixing, application, and cleanup.
- To help with cleanup, we recommend covering the tile surface with a high quality painter’s tape.
- Clean-up residue as soon as possible after grouting. Grout that is allowed to harden may be difficult to remove.
- Do NOT use scouring pads, steel wool, sandpaper, or other abrasive implements to remove grout haze, or damage to the tile surface may result.

CUTTING INSTRUCTIONS AND SAFETY

Be sure to wear appropriate eye protection and an approved dust respirator when cutting, grinding or drilling tiles.

- The tiles are best cut or mitered with a diamond abrasive wet-saw.
- Tiles can be drilled with a high-speed drill or a hole saw.
- Tiles can also be cut or drilled with a rotary saw (ex. Roto Zip, Dremel).
- Do NOT use tile cutters designed to score and break tiles.

CARE AND MAINTENANCE

- To clean, use an ordinary household cleaner. For best results, we recommend a liquid, non-abrasive cleaner.
- Liquid abrasive household cleaners should be used only after being tested in a small inconspicuous area to ensure that no damage will result.
- Do NOT clean with scouring pads, steel wool, or other abrasive implements or damage to the tile surface may result.
- Cleaners containing ammonia, bleach or other harsh chemicals should be wiped up shortly after application or damage to the tile surface may result.

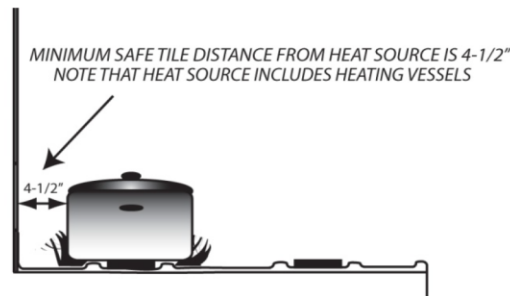
HIGH-TEMPERATURE INSTALLATION

High-temperature installations are those where tiled surfaces will be subject to temperatures 130°F (55°C) or greater. Common applications include: Certain kitchen cook tops, fireplace surrounds and steam rooms. Follow the high temperature installation instructions to ensure proper adhesion.

Important Note: Tiles are not recommended in areas where the tiled surface temperature will exceed 212°F (100°C). For example, do not install tiles as a heat shield behind a wood (or gas) stove.

Behind Cook-Tops without a Back-Guard (or back mount control panel)

To ensure proper bond, maintain a minimum distance of 4.5" inches between tiled surfaces and heat source. For the wall area directly behind and within 18 inches above the cooking surface, follow the high-temperature installation instructions.



Fireplace Surrounds

To ensure proper bond, maintain a minimum clearance of 6" from the fireplace opening. When used above and projecting more than 1½" from a fireplace face, maintain a minimum clearance of 12" above the fireplace opening. Consult state and local building codes to determine if more clearance is required in your area. Follow the high-temperature installation instructions.

Steam Rooms

To ensure proper bond, follow the high-temperature installation instructions.

HIGH-TEMPERATURE INSTALLATION INSTRUCTIONS

- Set tile with a water-cleanable epoxy mortar conforming to ANSI A118.3.
- Grout tile with a water-cleanable grouting epoxy conforming to ANSI A118.3.
- Follow setting and grouting instructions found in the Installation Instructions section of this document.

EASY AS 1, 2, 3 INSTALL



TESTED & APPROVED AT 300+ PSI

- POLYURETHANE CONSTRUCTION ADHESIVES - EPOXY GELS
 - **LIQUID NAILS ULTRA DUTY POLYURETHANE CONSTRUCTION ADHESIVE (F&D SKU #: 955200060)**
 - DEVCON EPOXY, LOCTITE EPOXY, LOCTITE PL PREMIUM POLYURETHANE, LOCTITE PL POWER GRAB POLYURETHANE, SIKA BOND POLYURETHANE.
 - MAPEI KERAPOXY, LATICRETE LATAPOXY, CUSTOM EBM EPOXY
- SURFACES:
 - STONE, CERAMIC, PORCELAIN, GLASS, FIBERGLASS, DRYWALL

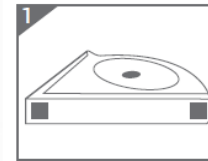


FLATBACK BATH ACCESSORIES

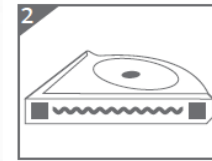
EASILY INSTALLS OVER
NEW OR EXISTING TILE

3 STEPS

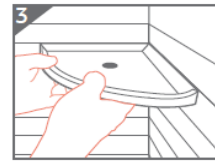
- APPLY TAPE INCLUDED
- APPLY ADHESIVE*
- PRESS INTO PLACE



APPLY TAPE INCLUDED



APPLY ADHESIVE*



PRESS & HOLD

Flatback Bath Accessories are designed to simply install over new or existing shower walls. Casa Antica - Floor and Decor accessories compliment any design and antimicrobial Q-Seal technology protects from mold, stains and scratches. Proudly made in the USA.

THE FINISHING TOUCH TO INSPIRED DESIGN, MADE EASY.

- EASY NO CUT INSTALLATION OVER NEW AND EXISTING TILE SHOWER WALLS
- INNOVATIVE DESIGN FOR OPTIMAL DRAINAGE
- CLEAN WITH ORDINARY HOUSEHOLD CLEANERS
- PROTECTED BY Q-SEAL, CASA ANTICA - FLOOR AND DECOR BATH ACCESSORIES NEVER NEED TO BE RESEALED

* USE POLYURETHANE CONSTRUCTION ADHESIVE OR EPOXY GEL (SOLD SEPARATELY)



FLATBACK BATH ACCESSORIES

INSTALLATION, USE & CARE INSTRUCTIONS

Thank you for your purchase, please enjoy your new Bath Accessory. These products are designed for easy installations over new or existing shower walls. They complement any ceramic, porcelain, metal or stone tile.

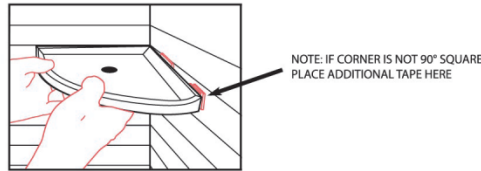
Q-SEAL™ PERMANENT PROTECTION
Accessory surfaces are protected by Q-Seal, a permanent sealer that is water and stain resistant, protects against abrasion, and is antimicrobial which inhibits the growth of stain and odor-causing mold and mildew. Q-Seal is factory-applied and never needs re-sealing.



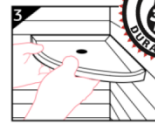
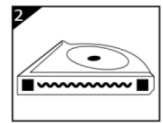
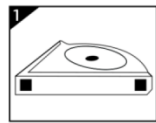
INSTALLATION INSTRUCTIONS

Our bath accessories are designed for easy no cut installations over existing shower walls. They complement any ceramic, porcelain, metal and stone tile.

- Prior to installation, clean surface with alcohol
- Locate position at desired height for install and mark it (use grout line when available)
- Use double sided tape *provided* and place on the 4 specified areas on the back of accessory – remove paper tabs before install
- If your shower isn't square add tape to fill gaps included



- Following adhesive manufacturer's instructions, apply adhesive along guideline on back edges of accessory
- Press and hold accessory into place
- After adhesive is cured, apply caulk to seal



APPROVED SUBSTRATES

- Marble, ceramic, glass, fiberglass reinforced wall panels and unpainted drywall

SETTING MATERIALS

Adhesive sold separately

Please use either:

1. **POLYURETHANE CONSTRUCTION ADHESIVE**
 - Liquid Nails Ultra Duty Polyurethane Construction Adhesive (F&D SKU #: 955200060)
 - Loctite PL Premium Polyurethane Tan Construction Adhesive
 - Loctite PL Premium Polyurethane Fast Grab Adhesive
 - Sika Pro Select
 - Titebond Fast Set Polyurethane
2. **2-PART EPOXY GEL / PASTE ADHESIVE**
 - Devcon 0.85 oz 5 Minute Epoxy Gel
 - Loctite Epoxy Gel
 - Laticrete Latapoxy 310 Stone Adhesive
 - Mapei Kerapoxy Adhesive
 - Custom Building EBM-Lite Premium Epoxy Bonding Mortar

CARE AND MAINTENANCE

- Clean with ordinary household cleaner. We recommend a liquid, non-abrasive cleaner
- Do NOT clean with abrasive implements (scouring pads or steel wool) as surface damage may result
- Cleaners containing ammonia, bleach, or other harsh chemicals should be wiped up shortly after application as surface damage may result

WARRANTY

Q-Seal is guaranteed to be water and stain resistant for as long as you own your home.



PARTE POSTERIOR PLANA ACCESORIOS PARA BAÑO

INSTRUCCIONES D INSTALACIÓN, USO Y CUIDADO

Gracias por su compra, esperamos que disfrute de su nuevo accesorio para baño. Estos productos están diseñados para instalarse fácilmente sobre paredes de duchas nuevas o existentes. Complementan cualquier cerámica, porcelana, metal o baldosa de piedra.

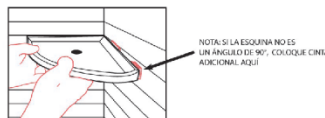
PROTECCIÓN PERMANENTE Q-SEAL™

Las superficies de los accesorios están protegidas con Q-Seal, un sellador permanente que es resistente al agua y las manchas, protege contra la abrasión y es antimicrobiano, lo que inhibe el crecimiento de manchas y hongos que causan mal olor y moho. Q-Seal se aplica en la fábrica y no necesita volver a sellarlo.

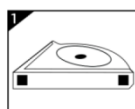


INSTRUCCIONES DE INSTALACIÓN
Nuestros accesorios para baño están diseñados para instalarse fácilmente sin cortes sobre las paredes existentes de la ducha. Complementan cualquier cerámica, porcelana, metal y baldosa de piedra.

- Antes de la instalación, limpie la superficie con alcohol.
- Ubique la posición a la altura deseada para la instalación y márquela (use la línea de lechada de cemento cuando esté disponible)
- Use la cinta adhesiva de doble cara suministrada y colóquela en las 4 áreas especificadas en la parte posterior del accesorio; quite el papel protector antes de instalar
- Si su ducha no está alineada, agregue cinta adhesiva para llenar los espacios. Se incluye.



- Siguiendo las instrucciones del fabricante del adhesivo, aplique adhesivo a lo largo de la línea de referencia en los bordes posteriores del accesorio
- Mantenga el accesorio presionado en el lugar
- Una vez que el adhesivo se cure, aplique masilla de calafateo para sellar



APPLY TAPE INCLUDED



APPLY ADHESIVE*
*SOLD SEPARATELY



PRESS & HOLD



SUBSTRATOS APROBADOS

- Mármol, cerámica, vidrio, paneles de pared reforzados con fibra de vidrio y panel de yeso sin pintar

MATERIALES PARA FIJACIÓN

El adhesivo se vende por separado

Use cualquiera de estas opciones:

1. ADHESIVO DE POLIURETANO PARA CONSTRUCCIONES

- Liquid Nails Ultra Duty Polyurethane Construction Adhesive (F&D SKU #: 955200060)
- Loctite PL Premium Polyurethane Tan Construction Adhesive
- Loctite PL Premium Polyurethane Fast Grab Adhesive
- Sika Pro Select
- Titebond Fast Set Polyurethane

2. PARTE 2 EPOXY GEL / PASTE DE ADHESIVO

- Devcon 0.85 oz 5 Minute Epoxy Gel
- Loctite Epoxy Gel
- Laticrete Latapoxy 310 Stone Adhesive
- Mapei Kerapoxy Adhesive
- Custom Building EBM-Lite Premium Epoxy Bonding Mortar

CUIDADO Y MANTENIMIENTO

- Use un limpiador doméstico regular. Recomendamos un limpiador líquido no abrasivo
- NO limpie con implementos abrasivos (almohadillas para frotar, lana de acero) ya que pueden dañar la superficie
- Los limpiadores que contengan amoníaco, blanqueador u otros productos químicos agresivos deben limpiarse poco después de su aplicación ya que pueden dañar la superficie

GARANTÍA

Q-Seal cuenta con una garantía de resistencia al agua y al óxido por el período de tiempo que usted posea su casa.

TECHNICAL PERFORMANCE SUMMARY

TEST	TEST METHOD	ANSI SPECIFICATION SUMMARY	QUESTECH RESULTS	PASS/FAIL
Bond Strength to Polymer Fortified Portland-Cement Mortar	ASTM C482	ANSI A137.1 50 PSI or greater	131 PSI	Pass
Breaking Strength	ASTM C648	ANSI A137.1 90 lbs. or greater	130-170 lbs. (¼" nominal thickness)	Pass
Facial Dimensions	ASTM C499	ANSI A137.1 Average facial dimension not to vary more than 4.0% from nominal Range of facial dimension not to exceed 0.6%	Average ≤ 4.0% Range/Max ≤ 0.6%	Pass
Coefficient of Friction (Floor Tile)	ASTM C1028-89 (withdrawn 2012) with no replacement ASTM standard	ANSI A137.1-2012 Section 9.61 for wet DCOF	<0.42	Approved for Dry & Level Interior Floors
Wedging	ASTM C502	ANSI A137.1 Not to exceed 0.6%	≤ 0.6%	Pass
Water Absorption	ASTM C373	ANSI A137.1 Not to exceed 20.0%	0.73%-1.21%	Pass
24 hr. Resistance to Household Chemical Substances	ASTM C650	No ANSI Specification	No effect. Ten (10) cleaning chemicals, two (2) base concentrations and two (2) acid concentrations	N/A
24 hr. Resistance to Staining	ASTM C1378	No ANSI Specification	No visual effect. Six (6) staining agents and two (2) cleaning procedures.	N/A
Surface Burning	ASTM E84-95b	No ANSI Specification	Class B	N/A
Surface Resistivity		No ANSI Specification	Questech is non-conductive	N/A