

CAUTIONS AND WARNINGS

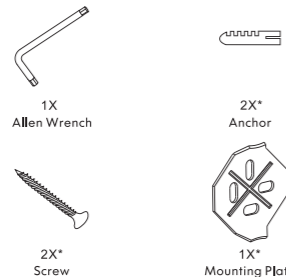
- ▲ Ensure to thoroughly review the instructions prior to installation.
- ▲ Wear safety goggles.
- ▲ Please follow the correct steps for installation. Do not force the installation to avoid damaging components.
- ▲ Refer to the instruction manual and user guide and obey all cautions and warnings when using power tools to avoid personal injury or property damage.
- ▲ Do not use this product as a grab bar or support. The product is not intended to support a person's weight. Using this product as a support could result in property damage, damage to the product or personal injury. Actual Load Limits:
 Robe Hook, 5.00kgs / 11.00LBS
 Towel Bar, 5.00kgs / 11.00LBS
 Towel Ring, 4.00kgs / 8.80LBS
 Toilet Paper Holder, 3kgs / 6.60LBS

CARE AND MAINTENANCE

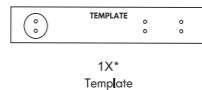
- In order to protect the finish and extend the life of your product, please use only soft, non-abrasive cloths and mild, non-abrasive cleaning agents.
- Scouring pads should not be used to clean the product as this will lead to damage to the product surface and finish.
- Do not use any kind of acid-based cleansers, sharp instruments or bleach to clean your product.

PARTS LIST

Mounting Hardware Included

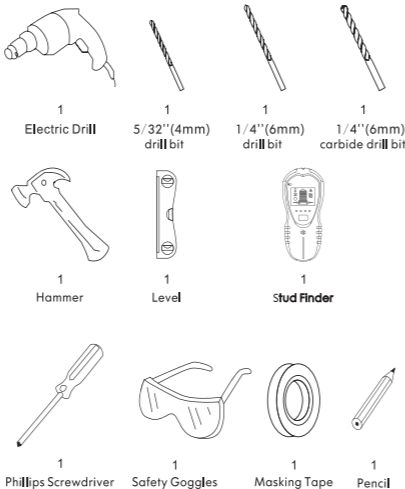


* Items with two mounting plates will be doubled.



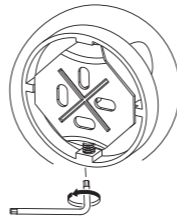
* Items with two mounting plates will be required.

ITEMS REQUIRED FOR INSTALLATION



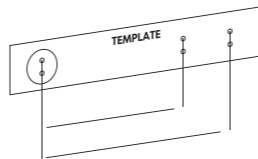
STEP 1

Locate mounting hardware. Use the allen wrench to loosen the set screw and take out the mounting plate(s) from the fixture.



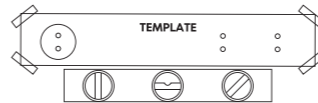
STEP 2

Identify on template which item you will be installing starting with the primary mounting plate image.



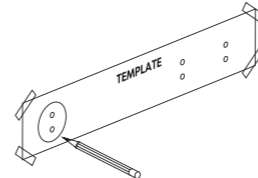
STEP 3

Position template on wall in desired location making sure it is level, then tape to the wall.



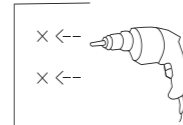
STEP 4

Using a pencil mark on the wall the locations of the fasteners through the template. If installing items with two mounting plates, you will need to make four markings.



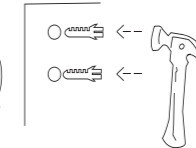
STEP 5A

Use a stud finder to locate studs as needed. Drill 5/32'' (4mm) holes at marked location. Be sure to keep drill level. Anchors will not be required.



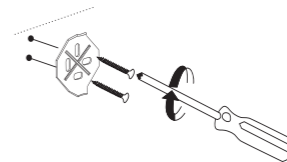
STEP 5B

If ceramic or sheetrock without wood wall stud, installation: drill 1/4''(6mm) holes at marked location. Be sure to keep drill level. Insert anchors into drilled holes with hammer. If drilling into tile, use a carbide drill bit, place a piece of masking tape on the tile prior to drilling to prevent breakage.



STEP 6

Position the mounting plate(s) over the holes in the wall from Step 5A or 5B. The indented tabs should be sticking outward from the wall. Indented tabs should be at the top and bottom. Insert and secure the screws. Repeat the same for the second mounting plate where relevant.



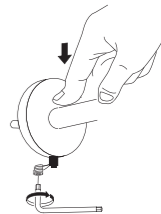
STEP 7

Attach fixture to mounting plate(s) using set screw. Set screw should be facing downward. Repeat the same for the second mounting plate where relevant.



STEP 8

Tighten the set screw(s) with allen wrench.



1

2

3

4

5

6